

## LUNG CANCER CHEMOTHERAPY ALGORITHMS

### Treatment Algorithm for SCLC

#### 1<sup>st</sup> line:

**Limited Stage, good PS, small volume** - concurrent chemo radiation with Cisplatin/Etoposide x 4 cycles, PCI on completion

**Limited stage, large volume or poor PS** - sequential cisplatin (or carboplatin) +/- etoposide x 4-6 cycles followed by thoracic consolidation treatment and PCI

**Extensive stage** - Carboplatin/Etoposide (in poor PS single agent carboplatin) 4-6 cycles, discuss PCI and thoracic consolidation radiotherapy on completion if response

#### 2<sup>nd</sup> line:

- If DFS >3 months and previous response to chemo, retreat with Carboplatin/Etoposide x up to 6 cycles
- If DFS < 3 months consider Cyclophosphamide/Adriamycin/Vincristine (CAV) x 4-6 cycles or Topotecan (if CAV contraindicated)

### Treatment Algorithm Mesothelioma

1<sup>st</sup> line: Platinum/Pemetrexed 4-6 cycles

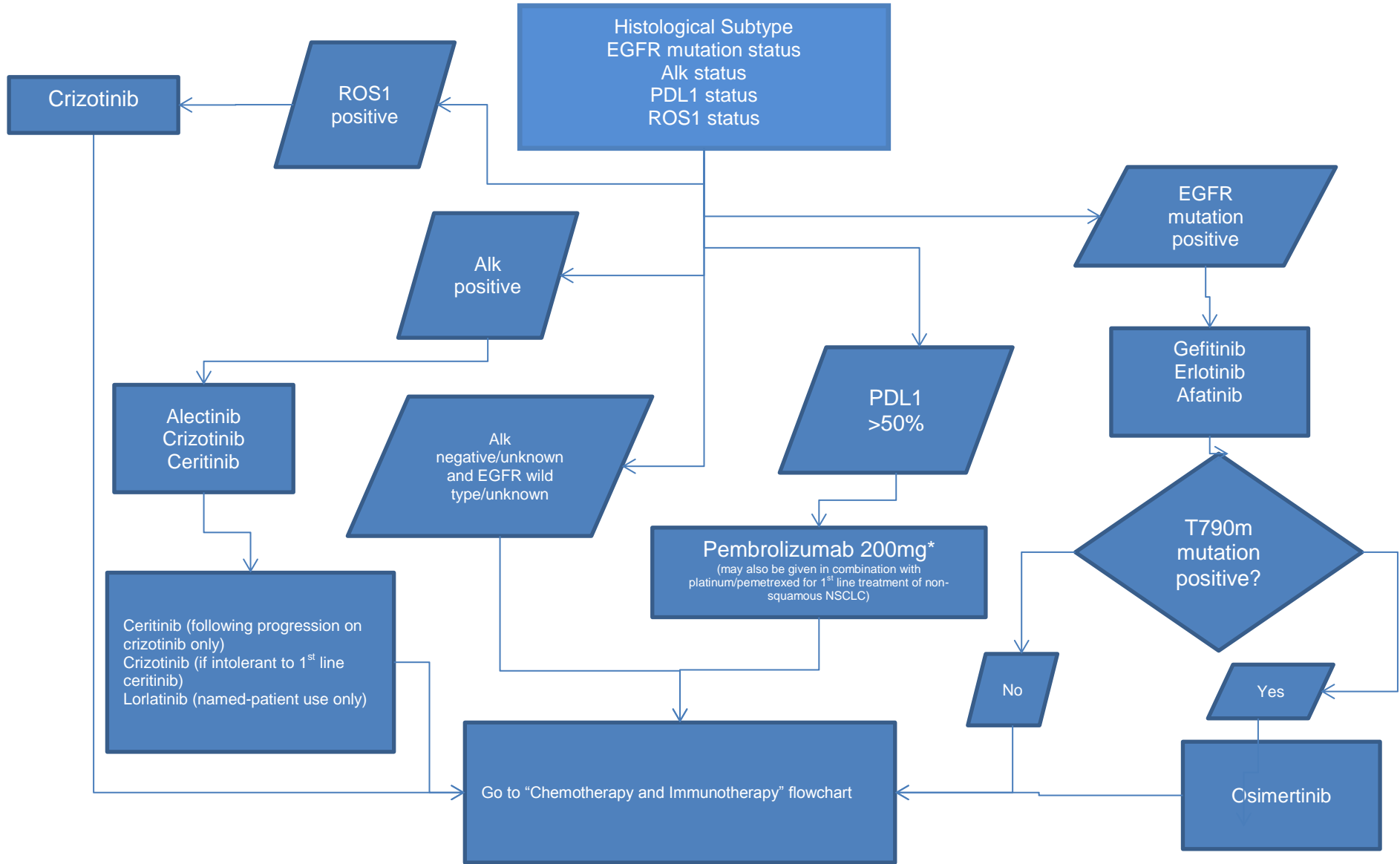
2<sup>nd</sup> line: consider re-challenge with Platinum/Pemetrexed (if reasonable disease-free interval) or SA Vinorelbine p.o.

## EARLY STAGE NSCLC ALGORITHM

**Chemoradiation:** Cisplatin/vinorelbine or carboplatin/paclitaxel. Darvalumab for 12 months following concurrent chemoradiation

**Adjuvant:** Cisplatin/carboplatin + vinorelbine 4 cycles

# NSCLC TREATMENT ALGORITHM



## Chemotherapy and Immunotherapy for NSCLC

