

LUNG CANCER CHEMOTHERAPY ALGORITHMS

Treatment Algorithm for SCLC

1st line:

Limited Stage, good PS, small volume - concurrent chemo radiation with Cisplatin/Etoposide x 4 cycles, PCI on completion

Limited stage, large volume or poor PS - sequential cisplatin (or carboplatin) +/- etoposide x 4-6 cycles followed by thoracic consolidation treatment and PCI

Extensive stage - Carboplatin/Etoposide (in poor PS single agent carboplatin) 4-6 cycles, discuss PCI and thoracic consolidation radiotherapy on completion if response

2nd line:

- If DFS >3 months and previous response to chemo, retreat with Carboplatin/Etoposide x up to 6 cycles
- If DFS < 3 months consider Cyclophosphamide/Adriamycin/Vincristine (CAV) x 4-6 cycles or Topotecan (if CAV contraindicated)

Treatment Algorithm Mesothelioma

1st line: Platinum/Pemetrexed 4-6 cycles

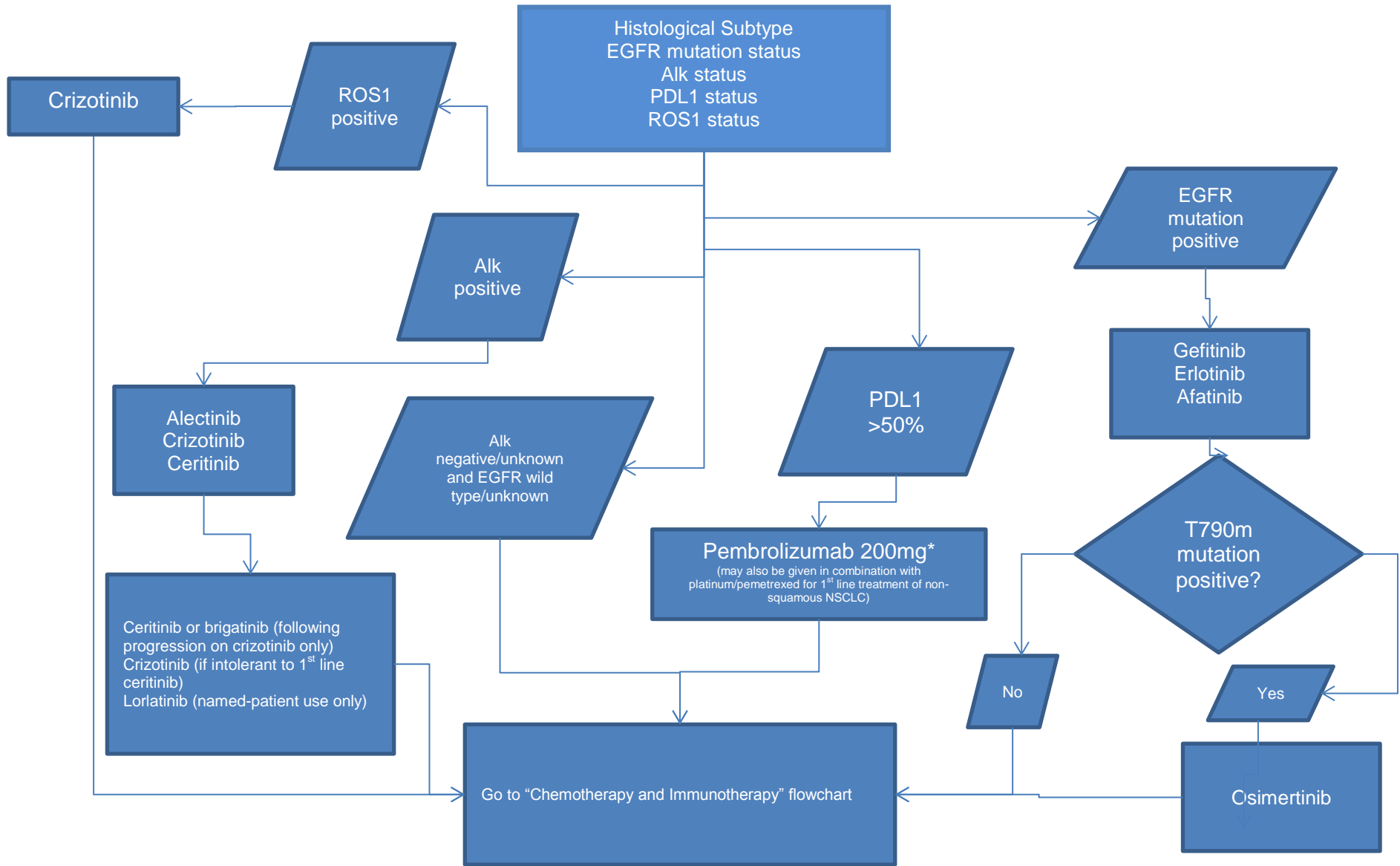
2nd line: consider re-challenge with Platinum/Pemetrexed (if reasonable disease-free interval) or SA Vinorelbine p.o.

EARLY STAGE NSCLC ALGORITHM

Chemoradiation: Cisplatin/vinorelbine or carboplatin/paclitaxel. Darvalumab for 12 months following concurrent chemoradiation

Adjuvant: Cisplatin/carboplatin + vinorelbine 4 cycles

NSCLC TREATMENT ALGORITHM



Chemotherapy and Immunotherapy for NSCLC

