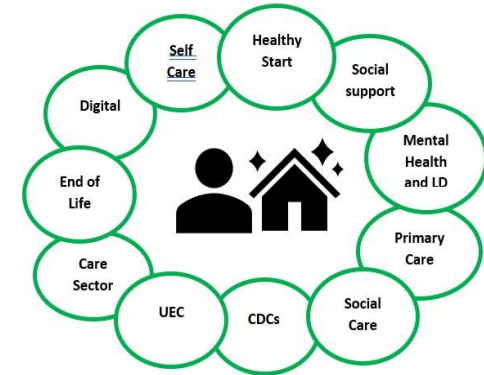
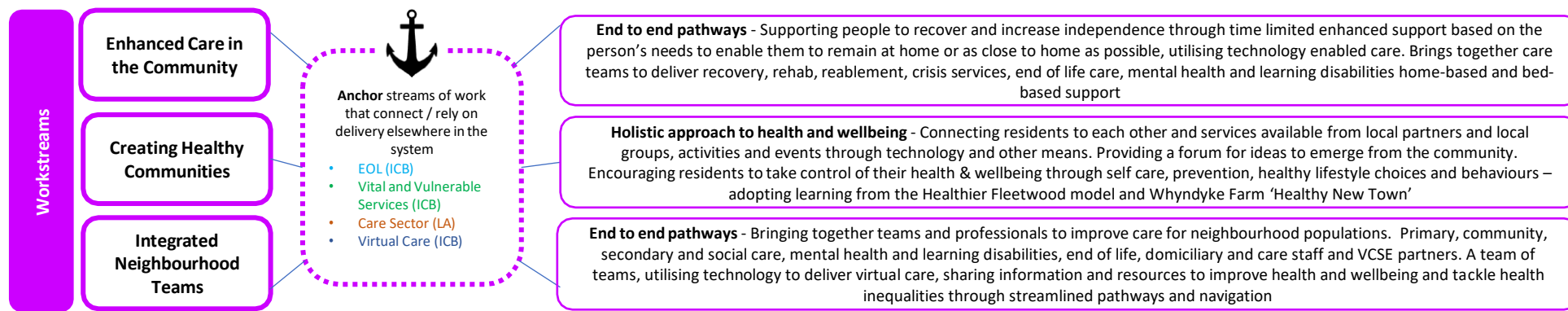


# Transforming Community Care – Plan on a Page

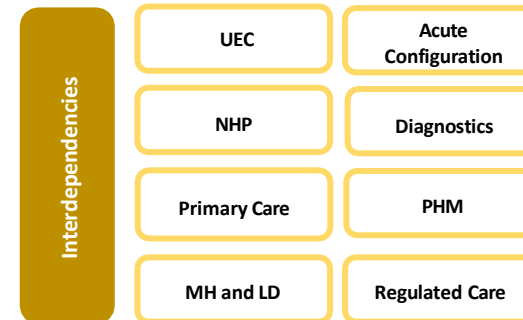
Programme Core Objective

Focus on the medium to longer term clinically led transformation of community services that is co-produced with LSC residents – with a 2–10-year strategy and delivery roadmap leading up to the new hospitals being in operation in 2035



**Delivery Phases**

| Phase   | Years                        | Areas of Focus  |
|---------|------------------------------|---|
| Phase 1 | Now (July 24) – 18 Months    | Baselining, reviewing current pathways and provision, creation and sign off of transforming community care strategy   |
| Phase 2 | 3 – 5 Years (26/27) – 30/31) | Implementation of strategy through granular delivery plans at place and system level for each phase (informed through the strategy)                                   |
| Phase 3 | 6 – 8 Years (30/31) – 33/34) |   |
| Phase 4 | 9 – 10 Years (33/34 – 35/36) | Fully mobilised and comprehensive community services offer that encompasses end to end pathways, teams of teams focused on 'well care' and wider health and wellbeing |



We will manage interdependencies through matrix working across portfolios and ICB directorates to embed mechanisms and enable interdependencies to be proactively and relentlessly managed to drive delivery of the collective transformation agenda

Delivered through matrix working across functions, sectors, portfolios with residents at the centre

